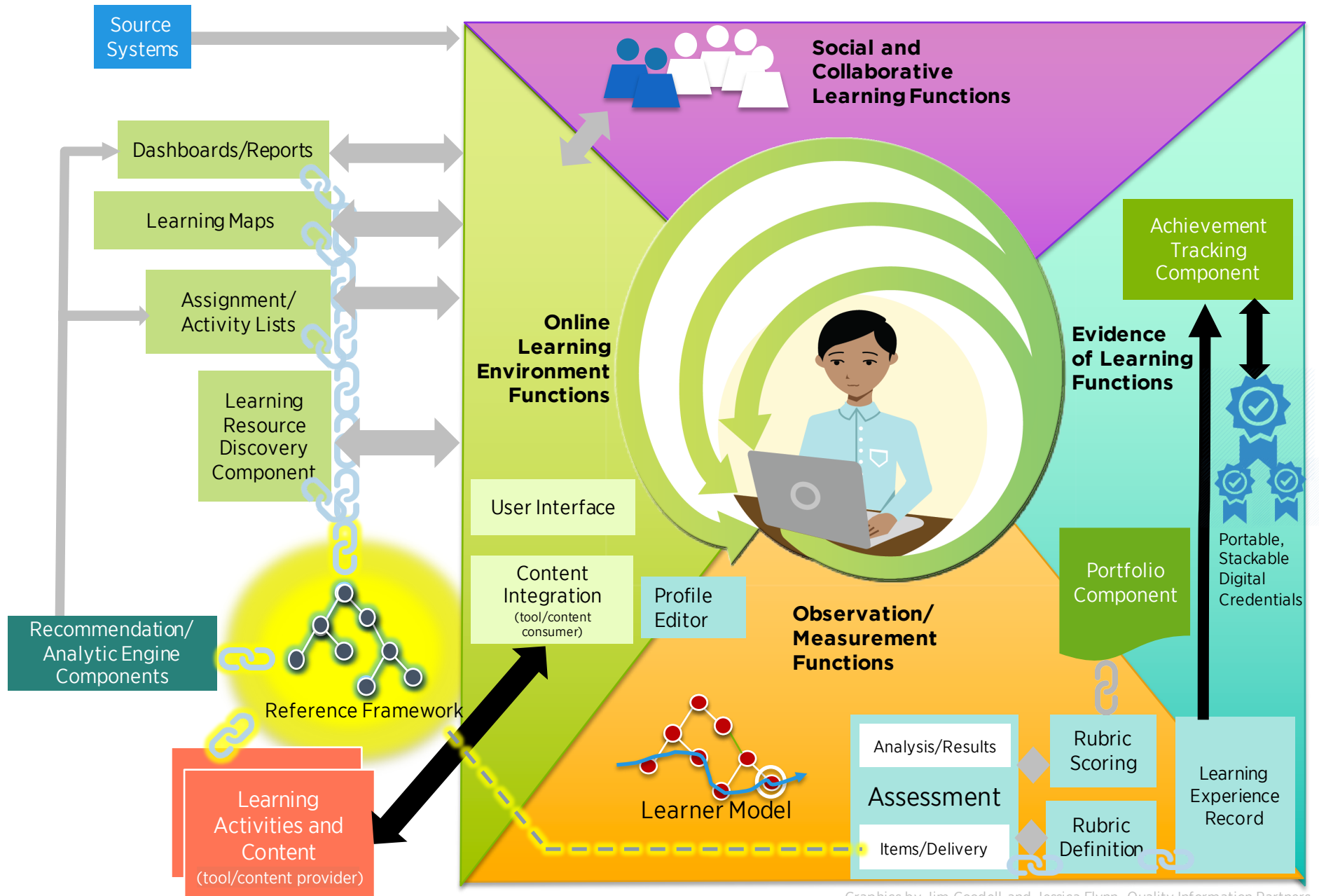


# Registry of Competency Frameworks

## Student-Centered Learning: Functional Requirements for Integrated Systems to Optimize Learning<sup>1</sup>



Graphics by Jim Goodell and Jessica Flynn, Quality Information Partners.

1. <http://www.inacol.org/resource/student-centered-learning-functional-requirements-for-integrated-systems-to-optimize-learning/>

**The transformation to the future of learning is stuck, and we have a solution.** Despite two decades of work, state standards and open education resources have not yet unlocked the full potential for digital learning.

**While curriculum resources are going digital, state standards and competencies are mostly locked in PDFs and are not easily usable by teaching and learning systems.** Because of this, educators everywhere are struggling to implement digital materials and transition to more personalized, competency-based learning.

**A solution is now in sight.**

**IMS Global** is rolling out a **technical specification and conformance certification** to create and exchange digital representations of state learning standard documents and their relationships to national and local competency frameworks. The specification supports alignment across frameworks and flexibility to create more granular competencies linked to existing learning standards.

The **Smarter Balanced Assessment Consortium** is supporting development of an **open source tool**, which is being **piloted in several states**, that will provide a free utility for states, districts, and other entities to manage and publish IMS-compliant versions of their competency frameworks.

**SETDA** has begun to create a **registry** and **governance** for national, state, and local education agencies and vendor service providers to link IMS-certified software that can publish authoritative competency frameworks and their relationships. This registry will be fully integrated with the Learning Registry and other work supported by CCSSO around digital content

**IMS Global, Smarter Balanced, SETDA, CCSSO**, and partners **QIP** and **PCG** are seeking funding to support the startup costs and national adoption and use of a Registry of Competency Frameworks.

**For more information and to discuss, please contact:**

Tracy Weeks, Executive Director, **SETDA**, [tweeks@setda.org](mailto:tweeks@setda.org)

Rob Abel, CEO, **IMS Global**, [rabel@imglobal.org](mailto:rabel@imglobal.org)

Layla Bonnot, **CCSSO**, [Layla.Bonnot@ccsso.org](mailto:Layla.Bonnot@ccsso.org)

Jim Goodell, **QIP**, [jimgoodell@qi-partners.com](mailto:jimgoodell@qi-partners.com)

Greg Nadeau, Public Consulting Group, [gnadeau@pcgus.com](mailto:gnadeau@pcgus.com)

## Phase 0 – Technical Standards



- Standards for digital representations of competency frameworks.  
*IMS Global Standard – Specification for interoperability of competency framework data based on existing standards including CEDS vocabulary and ASN description language.*
- Tools for digitizing, displaying, and aligning frameworks data.  
*ASN – Desire2Learn, Axion – HMH, SALT – PCG (Open source tool.)*
- Test interoperability between tools.

## Phase 1 – Go Digital with Competency Frameworks



- State convening and communications/outreach.
- Create/convert human-readable documents into machine-readable digital versions of frameworks.  
*Convert and vet 20 states' learning standards documents, 26 workforce competencies frameworks.*
- Enhance tools to scale with support for derivative frameworks.
- Establish governance for the Registry of Competency Frameworks.

## Phase 2 – Registry of Competency Frameworks



- Develop/launch infrastructure for the Registry-supporting alignment across frameworks.
- Create digital alignments for an initial five state standards.
- Develop transition plan for sustained governance.

## Phase 3 – Scale and Sustain the Registry



- Promote/scale use of the registry.
- Provide support for use of the open source tools for capture of state standards.
- Provide support for creation of derivative local frameworks and more granular competency definitions.
- Transition to permanent governance model.